

A tall palm tree stands in a field of grass. The sky is a mix of light blue and purple, with a crescent moon visible in the upper left. The text is overlaid on the image.

SCDC

DIVISION OF INDUSTRIES

**PRODUCTS AND SERVICES**

**[WWW.SCDCINDUSTRIES.SC.GOV](http://WWW.SCDCINDUSTRIES.SC.GOV)**

**1-800-922-8121**



EXECUTIVE  
LINE  
FURNITURE

# LANCASTER

WITH OR WITHOUT BEAUTY MOULDING

## DESK



30" x 60"  
36" x 66"

CRT DESK  
36" x 66" x  
24 3/4 x 48" x 30"

ALSO AVAILABLE

HUTCH/LATERAL FILE

HUTCH

60" OPEN

60" DOORS

LATERAL FILE

CONFERENCE TABLES

44" x 72" x 30"

44" x 96" x 30"

44" x 120" x 30"

## BOOKCASES



36" x 12" x 48"  
36" x 12" x 60"

AVAILABLE  
COLORS:

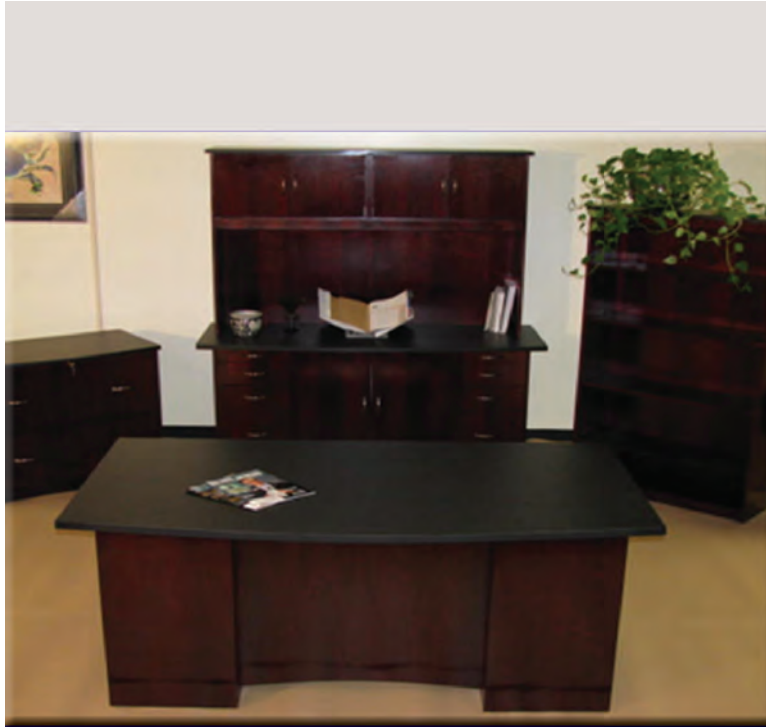
MAHOGANY  
WALNUT  
CHERRY

# CRESCENT

RICH FINISH W/BLACK LAMINATE TOP  
AND CURVE APPEAL

## DESK

30" x 60"  
36" x 66"  
CRT  
36" X 66" x 30"  
x 24" x 47" x 30"



## LATERAL FILE

BOOKCASE  
36"x 12" x 48"H  
36" x 12" x 60"H

## HUTCH

60" OPEN  
(SMALL DOORS  
AT TOP)

60" DOORS



CREDENZA  
60"KNEE SPACE  
60" DOORS



**PROFESSIONAL  
LINE  
FURNITURE**

# BERKELEY

## DESKS



DESK  
30" x 60"  
36" x 66"

CRT DESK  
36 X 66 X 30 X 24 X  
48 X 30

CREDENZA  
60" KNEE SPACE  
60" DOORS

## LATERAL FILES & HUTCHES



LATERAL FILE

HUTCH  
60" OPEN

60" DOORS

## BOOKCASES & CREDENZAS



36" x 12" x 48"H

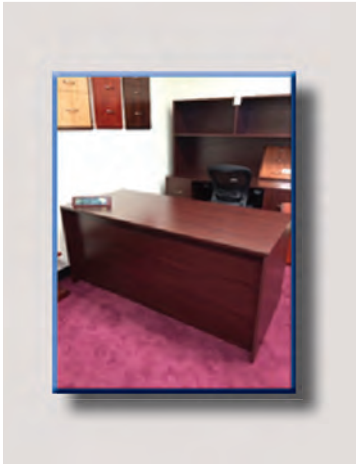
36" x 12" x 60"H

AVAILABLE  
COLORS:

MAHOGANY  
WALNUT  
CHERRY  
ELME

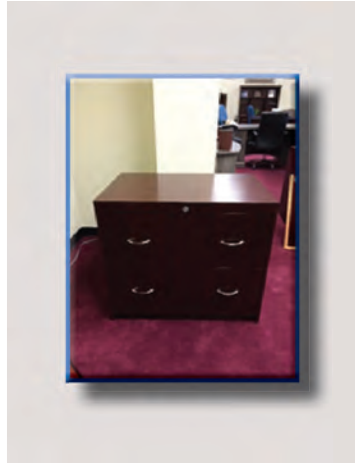
# KERSHAW

## DESKS



30" x 60"  
36" x 66"

## LATERAL FILE



LATERAL FILE

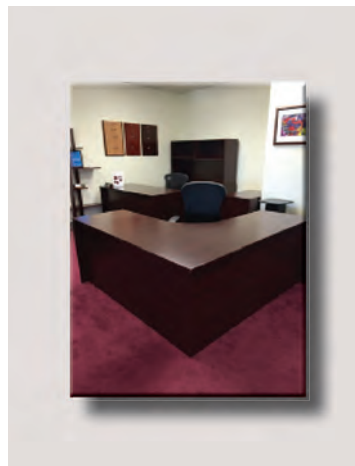
## CREDENZA & HUTCH



CREDENZA  
60" KNEE SPACE  
60" DOORS

HUTCH  
60" OPEN  
60" DOORS

## L-SHAPE DESK & BOOKCASES



L-SHAPE DESK  
70" x 70" x 30"

BOOKCASES  
36" x 12" x 48"

36" x 12" x 60"



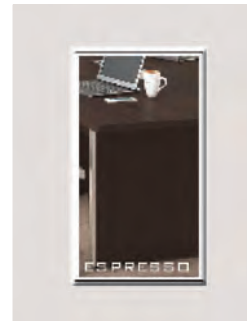
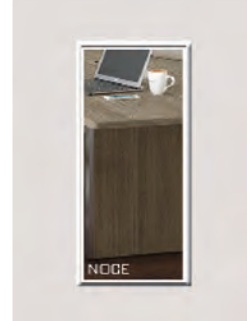
VALUE  
LINE  
FURNITURE



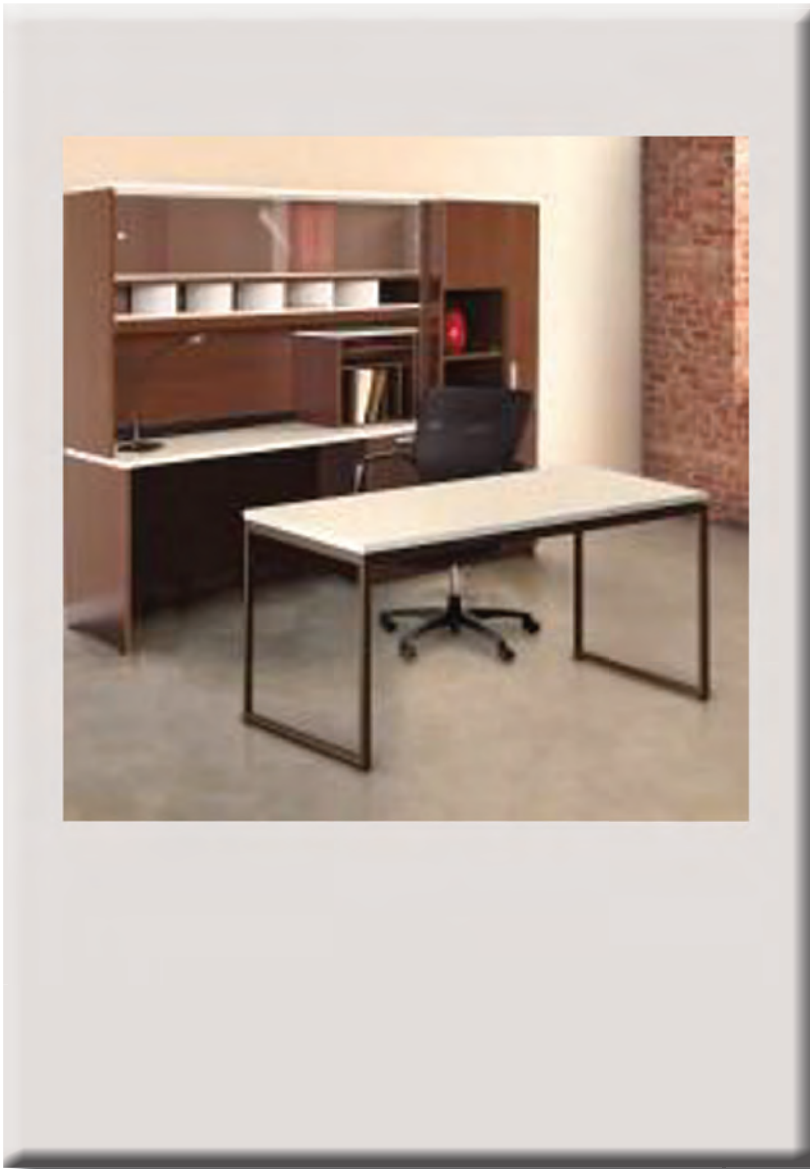
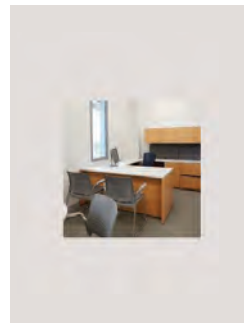
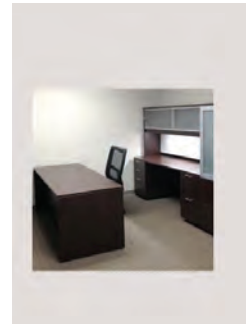
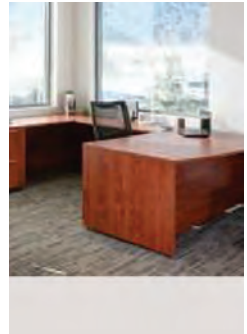
# CORP DESIGN

Many components available to design your office suite with five color choices to choose from.

Quick ship option available in Grigio (sample in show room)



# TRANSPIRE



# METROPOLIS

TYPICAL A1



TYPICAL 3B



TYPICAL E1



OPEN HUTCH



# SOUTH CAROLINA

## DIVISION OF INDUSTRIES

EACH YEAR APPROXIMATELY 600,000 STATE AND FEDERAL OFFENDERS ARE RELEASED INTO SOCIETY. SCDC INDUSTRIES STRIVES TO GIVE OFFENDERS MANY CHANCES FOR IMPROVEMENT, SO THAT THEY HAVE SUCCESS IN LIFE AND EMPLOYMENT WHEN THEY LEAVE CORRECTIONS.

OFFENDERS VOLUNTARILY LEARN TECHNICAL AND SOFT SKILLS FROM EDUCATIONAL AND INDUSTRIAL PARTNERS IN AREAS OF INTEREST DURING THEIR TIME WITH INDUSTRIES.

