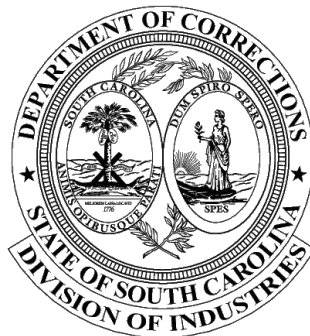


Vista II

multipurpose seating with a bariatric option



great things happen in a chair

Comfort & support made for any environment.

Vista II is a complete series that provides a comfortable place to sit—whether for a few minutes or hours. With poly, mesh and upholstered backs that are healthcare environment approved, set this chair anywhere.



Mobility & versatility

Vista II chairs offer a variety of options that support your specific need for guest seating. Choose from casters or glides, with or without arms. This chair is perfect for guest seating in offices, reception areas, lobbies, training spaces and more. Chairs stack 2 high.



features

- Integrated lumbar support at the inward curve of the back.
- Wall saver frame on all models.
- Available with or without arms.
- Casters available on chair models only.
- Back upholstery option on upholstered chairs.
- 500 lb max weight on bariatric & chairs.
- 12 year warranty (10 for casters, 5 for mesh).

options

breadth of line



Chair.

Stool.

Bariatric chair.

mesh colors



Black.

Silver.

Chocolate.

Blue.

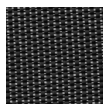
Green



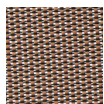
Cardinal.



Orange.



Black copper.



Natural copper.

frame finishes



Black.



Silver.

poly color



Black.

ganging brackets



Optional ganging brackets include choice of a unlockable latch, permanent ganger or fixed, permanent ganger.

